



Engineered For The Monitoring And Control Of Sanitary Diaphragm Valves

AccuTrak® 9900 General Purpose / Nonincendive

The 9900 Series offers an extremely compact, efficient and economical means of monitoring and controlling sanitary diaphragm valves. By combining three separate products into one pre-integrated unit; junction housing, position sensors and solenoid valve, the high cost of wiring, seal fittings and field labor is totally eliminated.



Designed for NEMA 4, 4x; Class I, Group A, B, C, D; Class II, Group F, G; Division 2 hazardous area applications, the 9900 enclosure is of a high integrity nylon resin for protection against caustic, alcohol or detergent washdowns.

Engineered Resin Enclosure
An FM approved nylon enclosure with local visual indicator assures both strength and corrosion resistance. Extra conduit entrances allow for integration of solenoid valves.

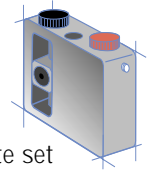
Magnum® Proximity Sensors

Hermetically sealed against explosive gasses and liquids, Magnum sensors provide maximum resistance against moisture and corrosion. Each sensor is rated at 3A/120 VAC, 2A/24 VDC.



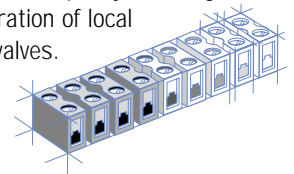
Touchset™ Triggers

Thumbscrew trigger adjustments eliminate set screws and provide instantaneous hand setting of position sensors.

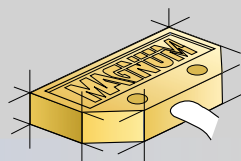
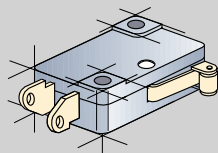


9 Point Terminal Block

9 pt. slide-out terminal block provides for simplicity of wiring and integration of local solenoid valves.



Standard Sensor Options



Micro-Switch V3

SPDT Form C, UL, CSA

Electrical Version	SPDT Form C
Electrical Characteristics	15A, 125/250 VAC • 10A, 24 VDC • .5A, 125 VDC .25A, 250 VDC
Operating Temp.	-25°C to +148°C

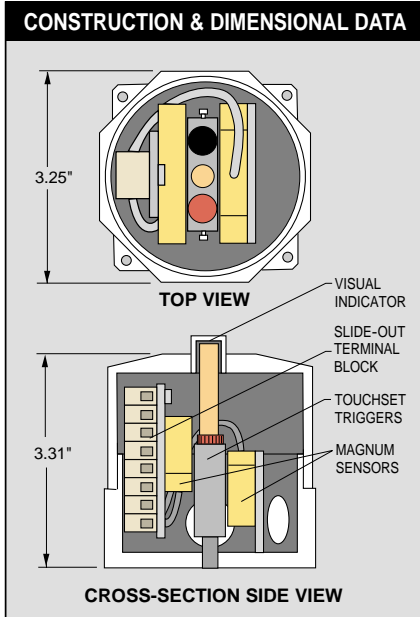
Gold plated contact available ("Simple Apparatus" - I.S. applications)

MAGNUM® Proximity Sensors

High Current Proximity Sensor, SPDT Form C
UL, CSA (Hermetically Sealed)

	SPDT	
AMPS	VAC	VDC
3	120	
1.5	240	
2		24

AccuTrak® 9900



AREA CLASSIFICATIONS

Nema 4, 4x Nonincendive
Class I, Groups A, B, C, D, Div. 2
Class II, Groups F, G, Div. 2

ENCLOSURE

Conduit Entries 2- 3/4 NPT
Terminal Points 9 Points standard

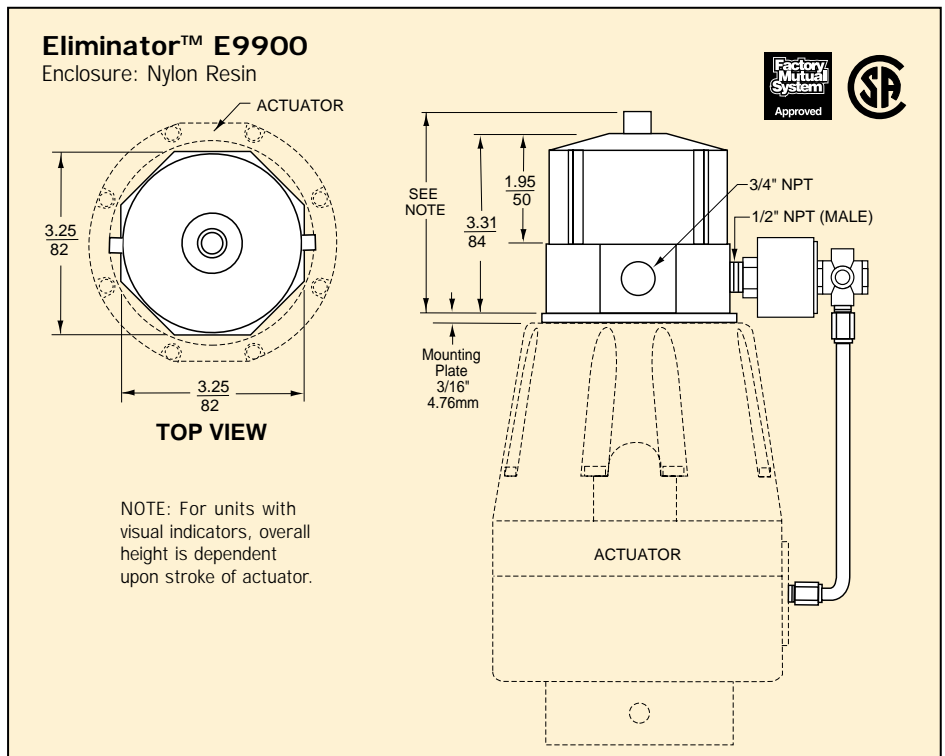
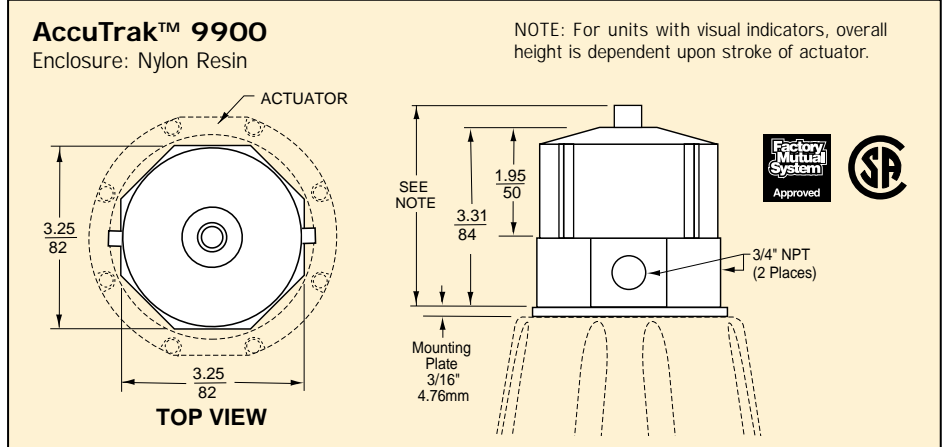
MATERIALS OF CONSTRUCTION

Enclosure Nylon Resin

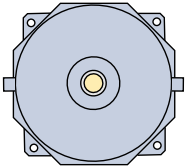
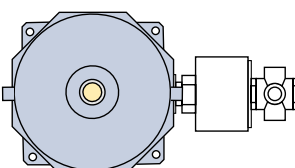
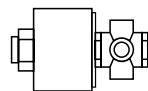
APPROVALS / CERTIFICATION

FM (Factory Mutual Research)
CSA (Canadian Standards Association)

DIMENSIONS (inches/mm)



ORDERING GUIDE

ACCUTRAK™	ELIMINATOR™ with Solenoid*	Solenoid Valve
<p>9918 2 Mechanical SPDT Switches NEMA 4, 4X</p> 	<p>E9918 2 Mechanical SPDT Switches NEMA 4, 4X</p> 	<p>To Be Specified by Customer*</p> 
<p>9920 2 Magnum SPDT Sensors NEMA 4, 4X, Nonincendive Class I, Grps. A, B, C, D, Div. 2 Class II, Grps. F, G, Div. 2</p> <p>Factory Mutual System Approved</p> <p>CSA</p>	<p>E9920 2 Magnum SPDT Sensors NEMA 4, 4X, Nonincendive Class I, Grps. A, B, C, D, Div. 2 Class II, Grps. F, G, Div. 2</p> <p>Factory Mutual System Approved</p> <p>CSA</p>	

*Hazardous area ratings of solenoid must meet Classes and Groups for intended use.