

SHARPE[®] VALVES

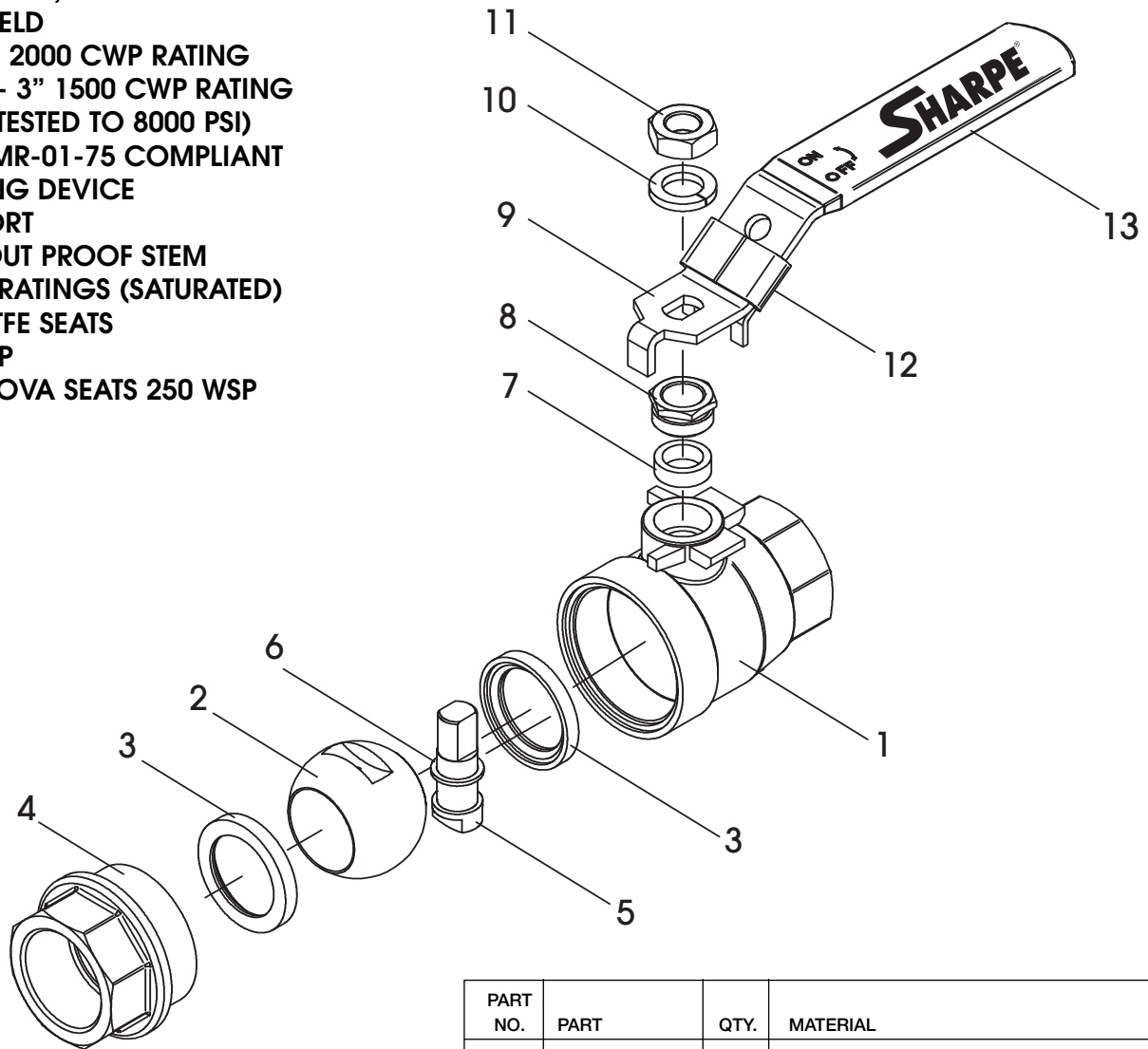


**SERIES 50B7
SEAL WELD THREADED
FULL PORT BALL VALVE**

SERIES 50B7

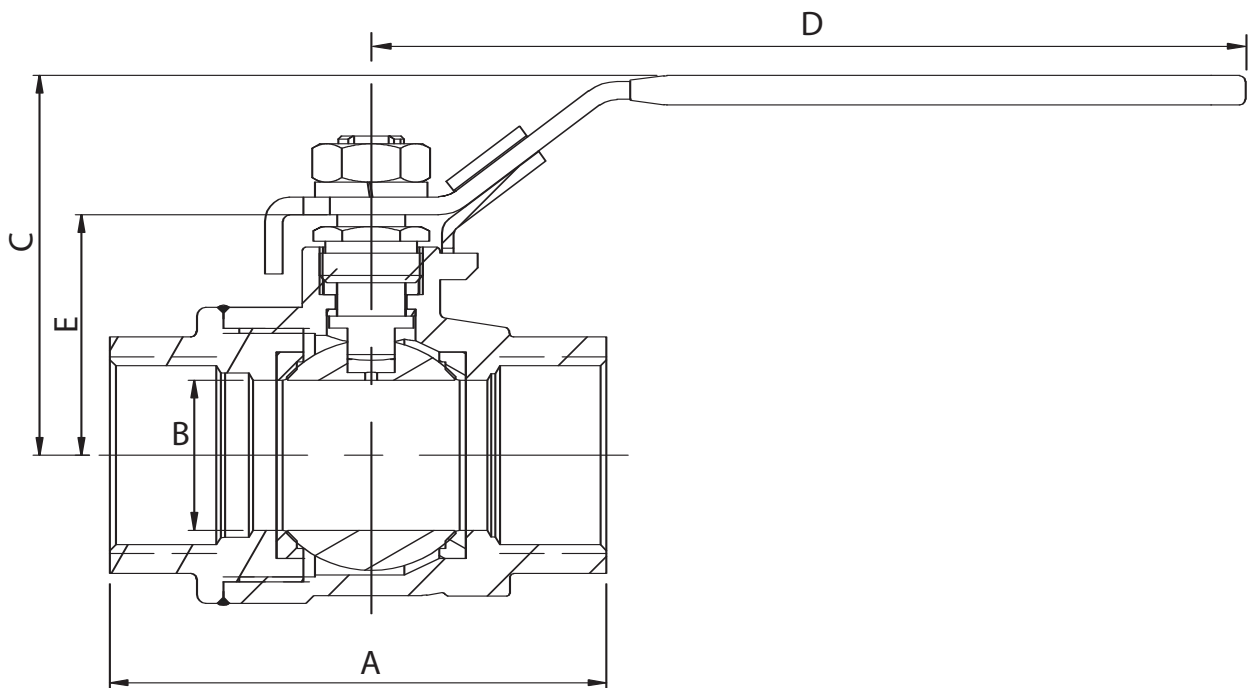
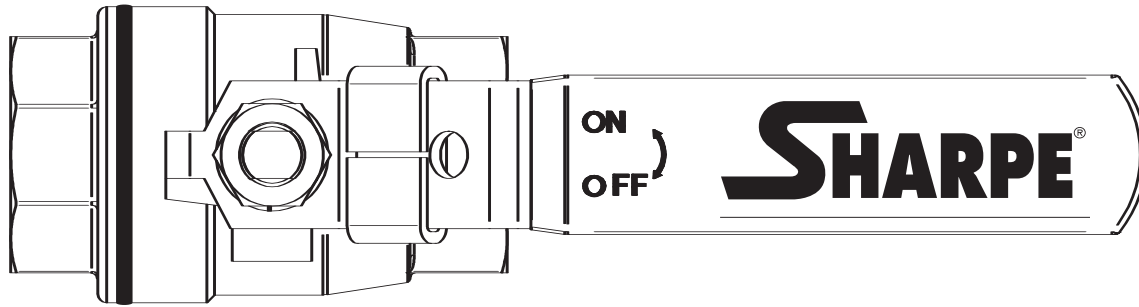
VALVE PARTS AND IDENTIFICATION

ASTM-A351, CF8M
 ASTM-A216, WCB
 SEAL WELD
 1/4"-2" 2000 CWP RATING
 2-1/2" - 3" 1500 CWP RATING
 (SHELL TESTED TO 8000 PSI)
 NACE MR-01-75 COMPLIANT
 LOCKING DEVICE
 FULL PORT
 BLOWOUT PROOF STEM
 STEAM RATINGS (SATURATED)
 WITH RTFE SEATS
 150 WSP
 WITH NOVA SEATS 250 WSP



PART NO.	PART	QTY.	MATERIAL
1	Body	1	316 Stainless Steel Carbon Steel ASTM A351 CF8M ASTM A216 WCB
2	Ball	1	316 Stainless Steel
3	Seat	2	R.PTFE / NOVA
4	End Plug	1	316 Stainless Steel Carbon Steel ASTM A351 CF8M ASTM A216 WCB
5	Stem	1	316 Stainless Steel
6	Stem Thrust Seal	1	R.PTFE / NOVA
7	Stem Packing	1	PTFE / Grafoil
8	Packing Nut	1	304 Stainless Steel
9	Handle	1	304 Stainless Steel
10	Lock Washer	1	316 Stainless Steel
11	Handle Nut	1	316 Stainless Steel
12	Locking Device	1	304 Stainless Steel
13	Handle Sleeve	1	Plastic

**SERIES 50B7
VALVE DIMENSIONS**



SIZE	A	B	C	D	E
1/4"	2.00	0.43	1.81	4.00	1.10
3/8"	2.00	0.43	1.81	4.00	1.10
1/2"	2.36	0.50	1.89	4.00	1.10
3/4"	2.75	0.80	2.04	5.00	1.30
1"	3.25	1.00	2.44	5.75	1.60
1-1/4"	3.80	1.25	2.56	5.75	1.74
1-1/2"	4.33	1.50	2.96	7.50	2.17
2"	5.27	2.00	3.25	7.50	2.45
2-1/2"	6.58	2.50	5.00	9.73	3.23
3"	7.55	3.00	5.40	9.73	3.62

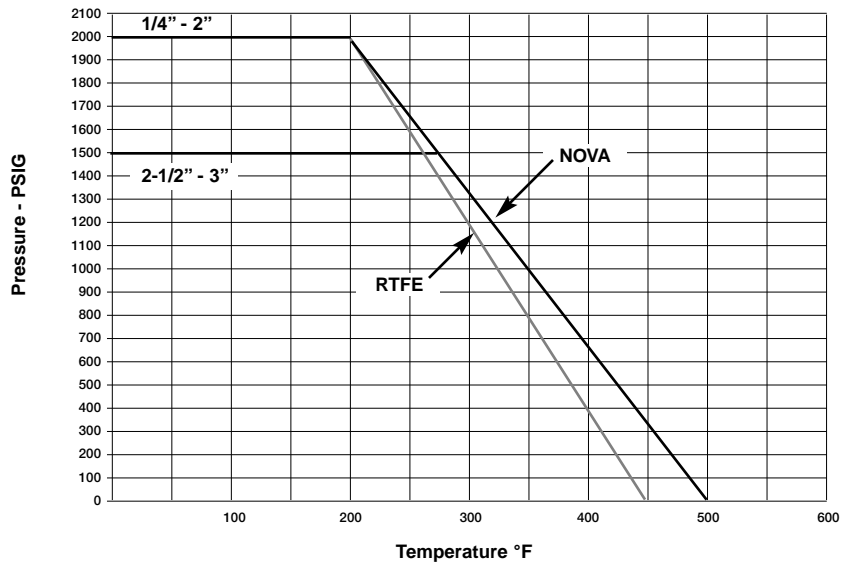
SIZE (INCHES)	APPROX CV.	WEIGHT (LBS)
1/4"	6	0.5
3/8"	6	0.5
1/2"	24	0.6
3/4"	35	1.10
1"	47	2.00
1-1/4"	81	3.00
1-1/2"	105	4.85
2"	241	8.00
2-1/2"	319	14.00
3"	580	20.00

CV-The volume of water in Gal./Min. that pass through a given valve with a pressure drop of 1 PSI.

SHARPE® VALVES

Choose from our full line of high quality valves and actuators to meet your needs.

Pressure-Temperature Ratings - Sharpe® Series 50B7 Welded Configuration



HOW TO ORDER

VALVE SIZE	VALVE SERIES	BODY & ENDS	PW	SEAT
1/4" 3/8" 1/2" 3/4" 1" 1-1/4" 1-1/2" 2" 2-1/2" 3"	50B7	4 = Carbon Steel 6 = Stainless Steel	PW	R = Reinforced Teflon N = Nova

3/4" 50B7 4 PW R

SHARPE® VALVES

A Division of Smith-Cooper International, LLC

Toll Free: 1-877-7SHARPE
(877) 774-2773

Fax: (708) 562-9250

Email: info@sharpevalves.com

www.sharpevalves.com

1260 Garnet Drive

Northlake, Illinois 60164 U.S.A.